

**From:** [Deibert, Pat](#)  
**To:** [Lara Juliusson](#)  
**Subject:** Fwd: NV-NECA GRSg habitat within Super PACs  
**Date:** Wednesday, January 14, 2015 3:12:40 PM  
**Attachments:** [BER GRSg Habitat DEIS and Super PACs.pdf](#)  
[PAC & GRSg Habitat with acres.pdf](#)

---

see if the attachments come through...

----- Forwarded message -----

**From:** **Baxter, Ronald** <[ronald\\_baxter@fws.gov](mailto:ronald_baxter@fws.gov)>  
**Date:** Wed, Jan 14, 2015 at 2:50 PM  
**Subject:** Fwd: NV-NECA GRSg habitat within Super PACs  
**To:** Pat Deibert <[pat\\_deibert@fws.gov](mailto:pat_deibert@fws.gov)>, Lief Wiechman <[lief\\_wiechman@fws.gov](mailto:lief_wiechman@fws.gov)>, Ted Koch <[ted\\_koch@fws.gov](mailto:ted_koch@fws.gov)>, Mary Grim <[mary\\_grim@fws.gov](mailto:mary_grim@fws.gov)>

All - URGENT!

Here are the maps just done by BLM for the superpacs. Acreages are also shown below the image. Mary would like to schedule a phone call regarding these this afternoon if possible. Please text or email her ASAP to let her(us) know of your availability.

Thanks,

Ron

----- Forwarded message -----

**From:** **Leisa Wesch** <[lwesch@blm.gov](mailto:lwesch@blm.gov)>  
**Date:** Wed, Jan 14, 2015 at 1:40 PM  
**Subject:** NV-NECA GRSg habitat within Super PACs  
**To:** Ronald Baxter <[ronald\\_baxter@fws.gov](mailto:ronald_baxter@fws.gov)>

Ron

Here are two maps – the one I showed you in the meeting and the other is the BER Habitat vs the Super PAC's

This one shows what I told you that the Super PACs line up with the original BER GRSg Habitat layer.

*Leisa Wesch*

*GIS Specialist – Greater Sage Grouse Project*

***BLM- NVSO***

***775-861-6421***

--

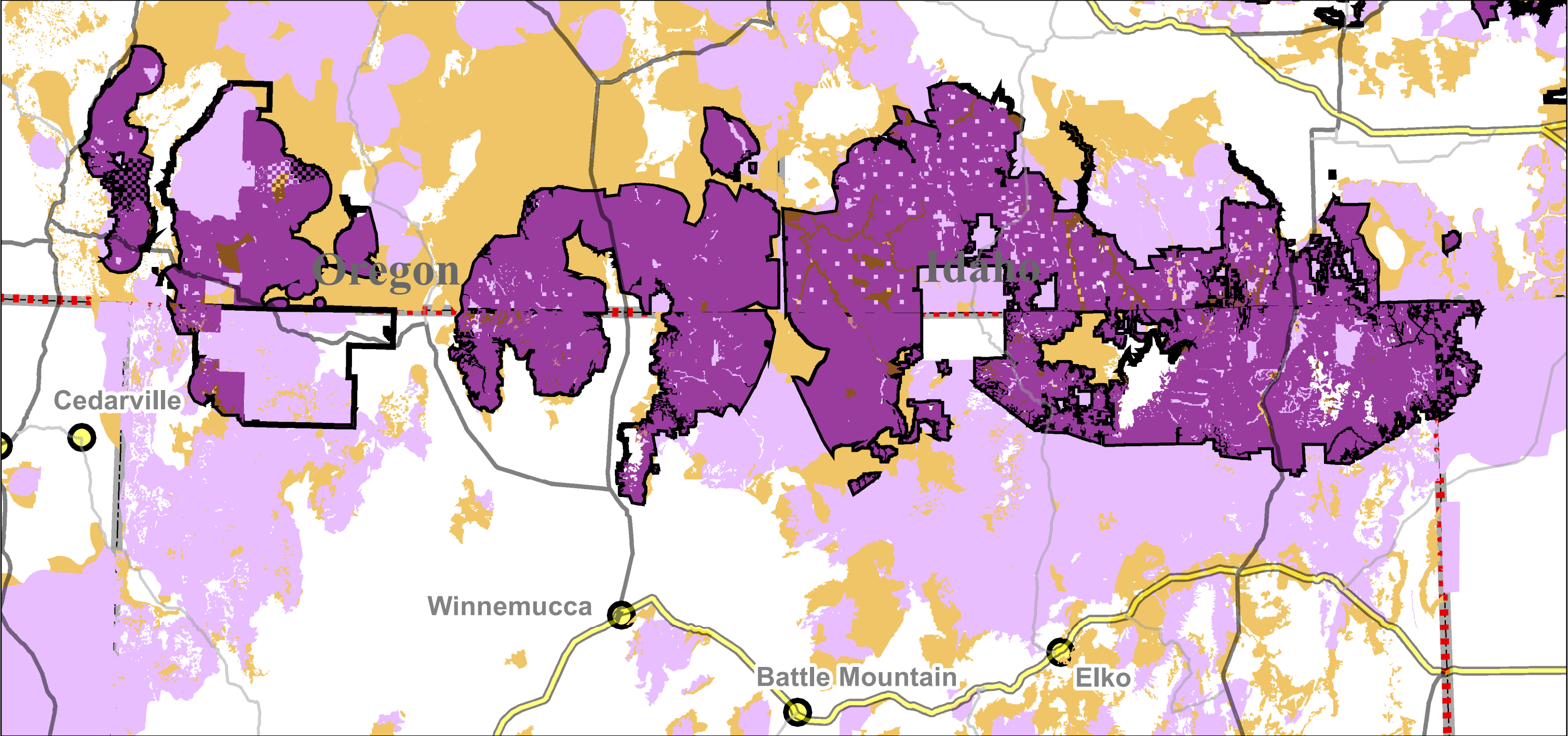
Ronald J. Baxter  
Endangered Species Biologist  
U.S. Fish and Wildlife Service  
1340 Financial Blvd., Suite 234  
Reno, NV 89502  
(775) 861-6377 (office)  
(951) 237-8404 (cell)

--

Pat Deibert, PhD  
Certified Wildlife Biologist®  
U.S. Fish and Wildlife Service  
5353 Yellowstone Road, Suite 308A  
Cheyenne, WY 82009  
307-772-2374, ext. 226

got leks?






# Super PACs vs BER GRSG Habitat Layer ( DEIS)

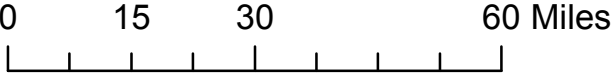


Overview Map



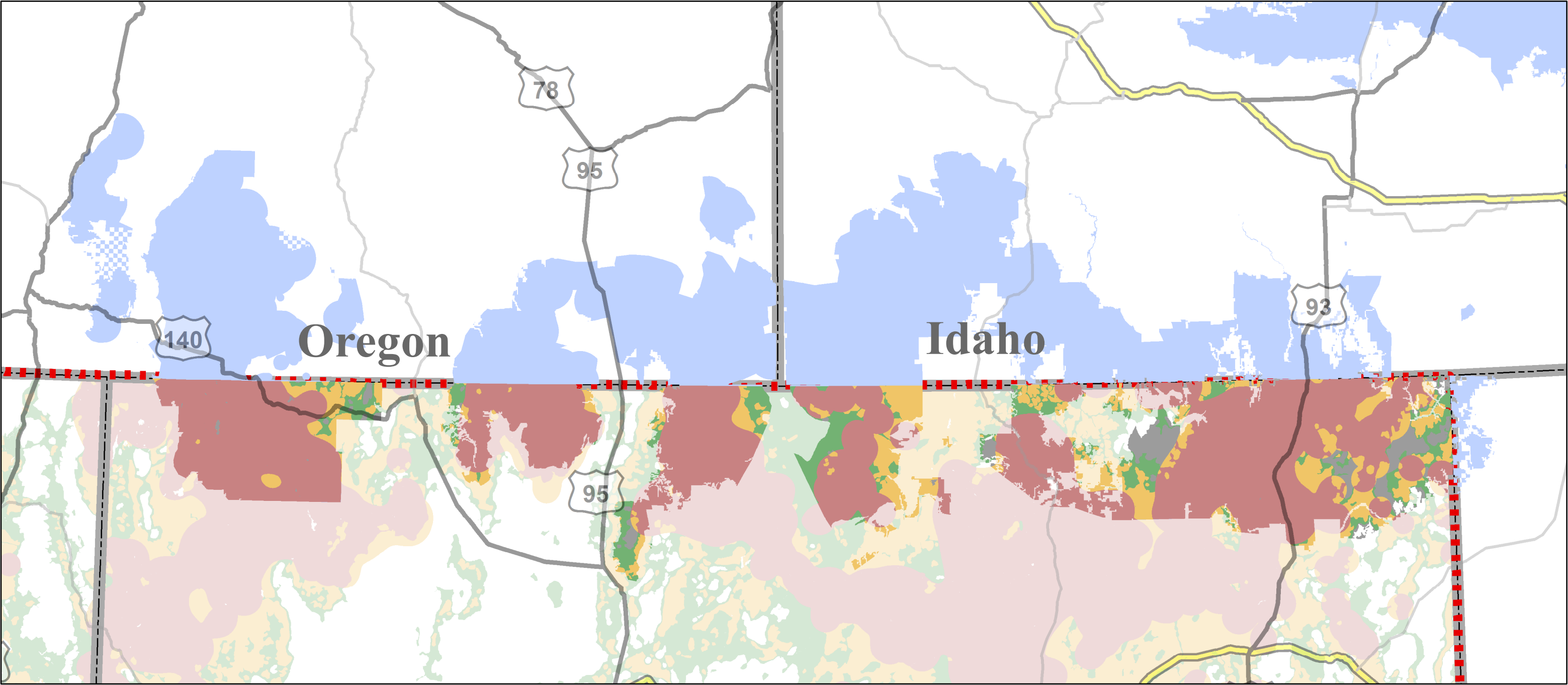
## Legend

-  USFWS Areas of Significance for GRSG ( Super PACs)
- BER\_SG\_PPH\_PGH\_base (DEIS)**
- Habitat\_Type**
-  PPH - all landstatus
  -  PGH - all landstatus
- BER\_SG\_Habitat\_SuperPACs**
- Habitat\_Type**
-  PPH - BLM/FS only
  -  PGH - BLM/FS only





NV-NECA GRSG Habitat with Priority Area of Conservation (PAC)



Overview Map



Legend

- Management**
- PHMA
  - GHMA
  - OHMA
  - Non-Habitat
  - Out-side NV-NECA

Habitat Type ( All Landstatus)	Acres
PHMA	2,541,991
GHMA	539,339
OHMA	311,340
Non-Habitat	162,565
Grand Total	3,555,235

Habitat Type (BLM/FS Lands only)	Acres
Core	1,960,705
Priority	445,691
General	271,522
Non-Habitat	147,876
Grand Total	2,825,795

